

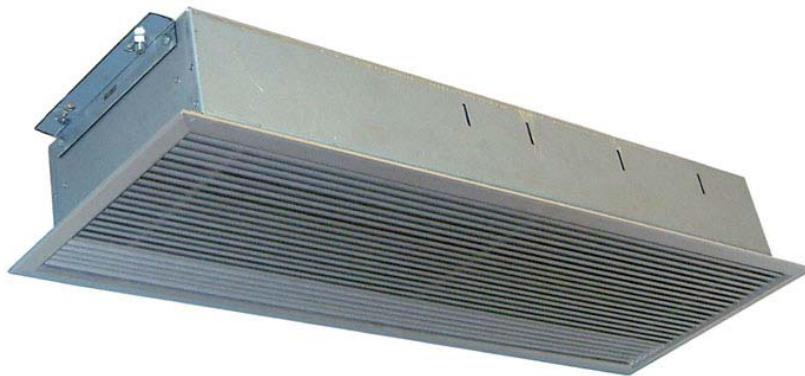
HEATSTORE

Avon Riverside, Victoria Road, Avonmouth, Bristol BS11 9DB
Telephone: 0117 923 5375 Fax: 0117 923 5374

INSTALLATION, OPERATION AND MAINTENANCE INSTRUCTIONS FOR WARM AIR CURTAIN HEATERS

Catalogue Numbers HSACR3000N & HSACR4500N

PLEASE RETAIN THIS LEAFLET FOR FUTURE MAINTENANCE



MODELS

These units are 990mm 3kW & 4.5kW modular recessed heaters designed for mounting above doorways and similar entrances to fit directly into a 600 mm grid in a suspended ceiling, and may be used as space heaters. (Minimum ceiling height of 2.2m: maximum height 2.8m).

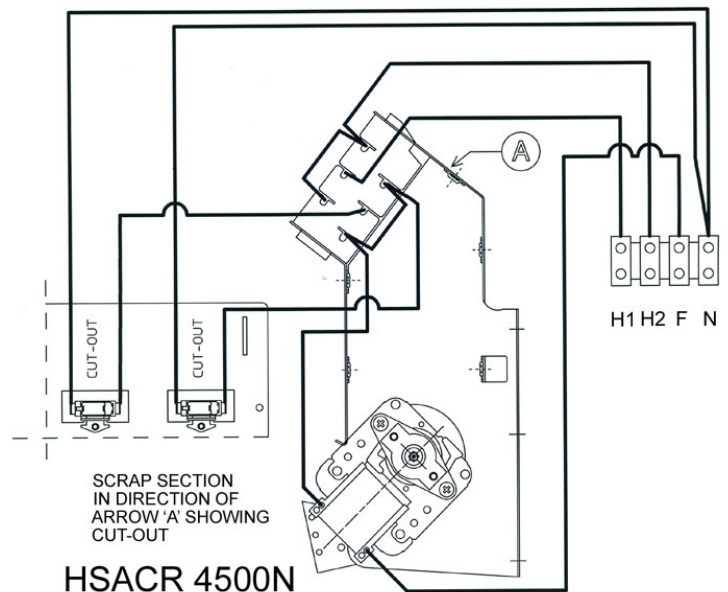
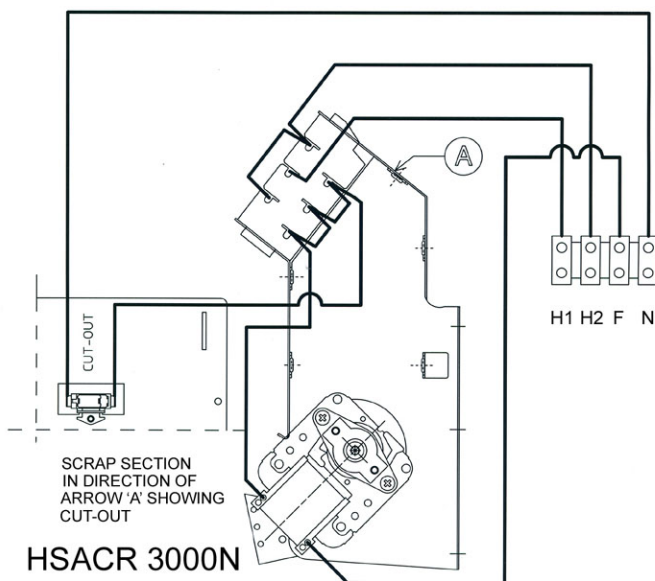
MOUNTING

When fitting ensure that the air discharge is situated as close to the door as possible. The recessed air curtains are designed to fit directly into any suspended ceiling, especially ceiling tile grid formation. If the grid does not align with the door then it will need modifying.

The unit should be mounted so that the airflow is not obstructed by any part of the doorframe.

INSTALLATION

Each unit is provided with 2 brackets with 4 x M6 inserts (2 either end) to allow the unit to be suspended via threaded rods or wire ties. Please note, when fixing using threaded rods or wire ties (not supplied) that a suitable structure must be used ensuring that it can maintain the unit weight. Ensure that locking nuts are fitted to stop the threaded bar/wire ties rotating and coming away from the casing. For dimensions of fixing centres please see figure 1.



ELECTRICAL CONNECTIONS

These units are suitable for connection to a 230/240 Volt 50 Hz single-phase AC supply. The heaters consume 3kW, 4.5kW respectively at 240 volts when switched to the full heat position.

HSACR3000	3 kW	12.5A
HSACR4500	4.5 kW	18.75A

Units should only be wired by a competent electrician in accordance with the latest edition of the IEE wiring regulations. Ensure that the supply cables and circuit breakers are sufficient for the air curtain being installed.

The appliance should be connected to the supply via a circuit in which there is an all-pole switch.

To gain access to electrical connection the recessed grille must be removed. (The grille is secured to the enclosure of the air curtain via 4 cross head screws). To remove the grille from the unit release 2 screws positioned in the corners under the vanes of air intake then remove the screws on the opposite corners. Move the grille to the side and lift. Four sets of entry holes are provided within the casing.

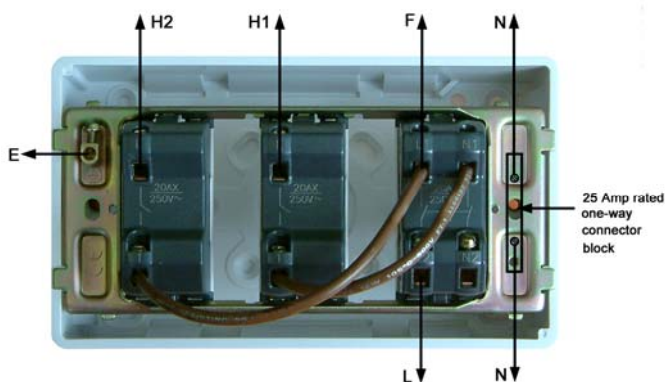
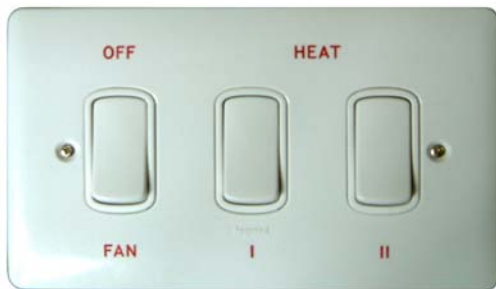
For safety reasons a sound earth connection must always be made to the unit before it is put to use. The unit should be wired in accordance with IEE Regulations for the Electrical Equipment of Buildings.

NOTE: The unit **MUST** be reliably earthed.

OPERATION

All units are supplied with a remote switch that gives the following functions; On/off & two heat settings.

For thermostatic control a room thermostat maybe connected.



CONTROLS

To switch on the appliance and operate the blower, depress the left-hand switch with a control light (marked "FAN").

When the centre switch only (marked with a single bar) is depressed the heat output is 1/3 of full heat. When the right hand switch only (marked with a double bar) is depressed the heat output is 2/3 of full heat. When both the centre switch and the right-hand switch are depressed the full heat output is available.

MAINTENANCE

Always ensure that the main external electricity supply is switched off before attending to the servicing of your Claudgen Screen-Zone heater.

To obtain best results from your heater it is necessary to avoid the build up of dust and dirt within the unit and on the air inlet and discharge grills. For this reason regular cleaning is necessary, paying particular attention to the removal of dirt build up on the rotor blades. A single drop of light oil should be applied to the motor bearing from time to time.

PROTECTION (Thermal Cut out)

The units are protected from overheating in the event of fan failure or an obstruction of the free airflow, by an auto reset thermal cut out. If this happens the thermal cut out effectively switches off the appliance. The appliance will not operate until it has cooled down. If this fault re-occurs again, refer to 'fault conditions'.

FAULT CONDITIONS

If the heater will not operate, disconnect it from the mains and arrange for a certified electrician to attend to investigate the reason.

TO REPLACE THE FAN HEATER ASSEMBLY

- Remove the grille.
- Disconnect the internal wiring from the main terminal block.
- Remove the four nuts and washers fixing the fan heater assembly to the back of the case.
- The fan heater assembly can now be eased forward and removed from the heater case.
- Fit replacement fan heater and reassemble in reverse order.

SPARES

It is essential when ordering spares or replacement parts to state the model number and the serial number on the rating plate fixed to the top of the unit.

In the interest of progress the Company reserve the right to vary specifications from time to time without notice. The material listed is offered subject to the Company's General Conditions of Sale, a copy of which can be obtained on request.

NOTE: DO NOT COVER any of the air inlet or outlet grills, at any time.