

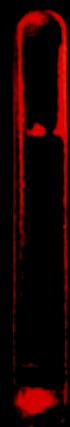
THE NATION'S FAVOURITE WATER HEATER HAS JUST GOT BETTER.



INTRODUCING:

ANDRIS LUX

An evolution in water heaters
Next Generation Europrisma



IMPROVED PERFORMANCE, EFFICIENCY AND DURABILITY
FASTER HEAT UP TIMES • INSTALLATION IN 10 EASY STEPS
CUTTING EDGE COMPACT NEW ITALIAN DESIGN • ErP COMPLIANT
TITANIUM ENAMELLED TANK • COPPER HEATING ELEMENT (NICKEL FREE)



3 year warranty available.



Up to A class ErP rated.



EXTERNAL TEMPERATURE REGULATION

Easy temperature setting thanks to the mechanical knob and 'E' setting.



ITALIAN DESIGN

Elegant, modern design and splash-proof structure.



TITANIUM PLUS

Titanium enamelled inner tank.



Kiwa approved product.

HOT WATER | HEATING | RENEWABLES
ariston.co.uk



ANDRIS LUX

NEW GENERATION OF EUROPRISMA

10 15 30

UNDER/OVER SINK UNVENTED ELECTRIC WATER HEATER

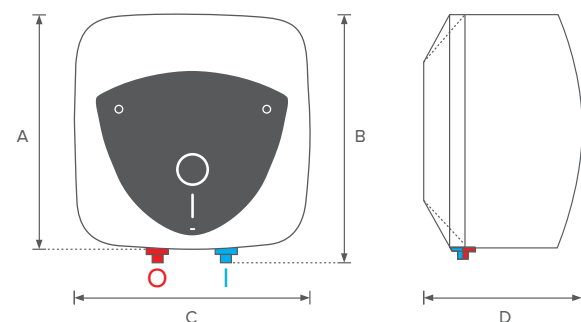
Ariston has taken the very best in unvented electric water heating – and made it even better. More energy efficient, more accurate, more compact: the sophisticated new design encases an evolution in electric water heating.

With a range of capacities from 10 to 30 litre units, the Andris Lux range is the cutting edge in water heating.

KEY FEATURES

- Modern, cutting-edge and stylish design
- Easy to operate with mechanical dial
- 'E' setting on the dial to optimise comfort and energy saving
- Copper heating element (Nickel free)
- Titanium enamelled tank and 4-bolt flange for robustness and durability
- Heating lamp to show the heating cycle is in process
- Fast reheat times
- Installation in 10 easy steps

DIMENSIONS



	10 OR	10 UR	10 UR / 2kW	15 OR	15 UR	15 UR / 2kW	30 R
A	360 mm	360 mm	360 mm	360mm	360 mm	360 mm	447 mm
B	385 mm	385 mm	385 mm	385 mm	385 mm	385 mm	476 mm
C	360 mm	360 mm	360 mm	360 mm	360 mm	360 mm	447 mm
D	298 mm	298 mm	298 mm	346 mm	346 mm	346 mm	410 mm

SEE PAGE 29 FOR FULL SPECIFICATION, TECHNICAL DATA AND ACCESSORIES.

OUR REFERENCE	PRODUCT CODE	DESCRIPTION	ELEMENT RATING
ANDRIS10O	3100302	New Europrisma/Andris Lux 10L O/Sink 3kW	3kW
ANDRIS10U	3100303	New Europrisma/Andris Lux 10L U/Sink 3kW	3kW
ANDRIS10U2	3100306	New Europrisma/Andris Lux 10L U/Sink 2kW	2kW
ANDRIS15O	3100308	New Europrisma/Andris Lux 15L O/Sink 3kW	3kW
ANDRIS15U	3100309	New Europrisma/Andris Lux 15L U/Sink 3kW	3kW
ANDRIS15U2	3100310	New Europrisma/Andris Lux 15L U/Sink 2kW	2kW
ANDRIS30OAB	3820017	New Europrisma/Andris Lux 30L O/Sink 3kW (Including Kits A, B & C)	3kW

SEE PAGES 14-17 FOR INSTALLATION INFORMATION

INSTALLATION OPTIONS

IF YOU WANT YOUR HOT WATER AT MAINS PRESSURE, THEN ANY OF THE WATER HEATERS CAN EASILY BE CONNECTED TO YOUR INCOMING COLD WATER MAIN. OR, IF YOUR COLD WATER COMES FROM A STORAGE TANK, THEN THE PICCOLO IS IDEALLY SUITED FOR CONNECTION TO A GRAVITY FED SYSTEM.

It is important to note that the larger 30 litre Andris Lux is subject to the requirements of Building Regulations and must be fitted by a fully qualified person who holds the necessary certification.

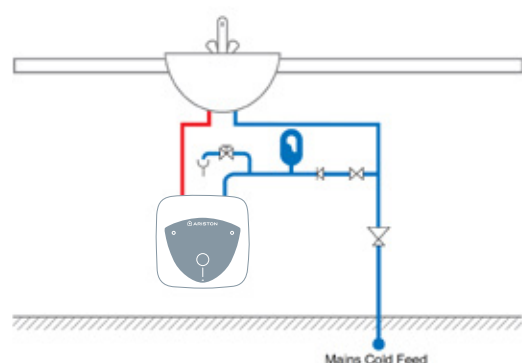
Unvented units of 15 litres and under are not subject to the same regulations but should however only be fitted by a suitably trained person.

In addition to the above units, Ariston also has a complete range of larger unvented cylinders (80 litres to 500 litres), which are suitable for all domestic and light commercial applications.

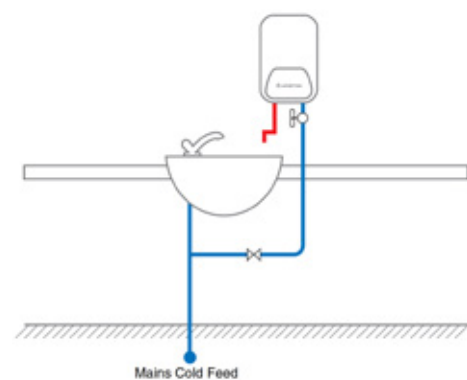
If you require further technical advice or information, our highly experienced technical advisors can be contacted on 0330 240 7777. Should you wish to achieve 'Ariston Accredited' status then Ariston run training courses at various centres nationwide.

To book a course, please contact 01494 418 585.

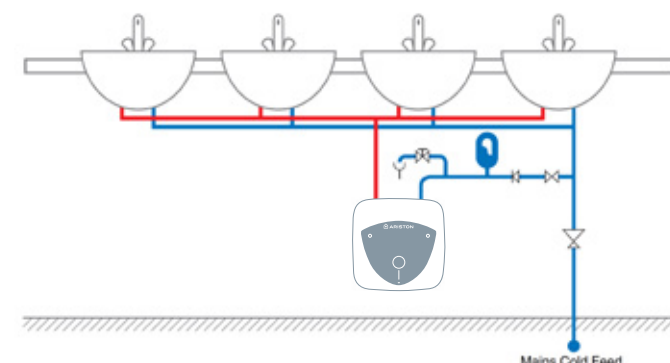
UNVENTED SINGLE INSTALLATION



OPEN OUTLET INSTALLATION



UNVENTED MULTIPLE INSTALLATION



IN ORDER TO FIT AN ARISTON ANDRIS LUX IT IS GOOD PRACTICE AND SOMETIMES MANDATORY TO INSTALL ONE OR SEVERAL OF THE FOLLOWING KITS:



KIT A EXPANSION VESSEL & NON-RETURN VALVE

An expansion vessel is a device that takes up the expansion of water in the domestic hot water system when it is heated. This prevents build up of excess pressure.

The non-return valve prevents backflow of expanded hot water in to the cold water main.



KIT B 3.5 BAR PRESSURE REDUCING VALVE

The maximum cold water inlet pressure designed for the Andris unit is 3.5 bar therefore this pressure reducing valve controls the water to not exceed this limit.

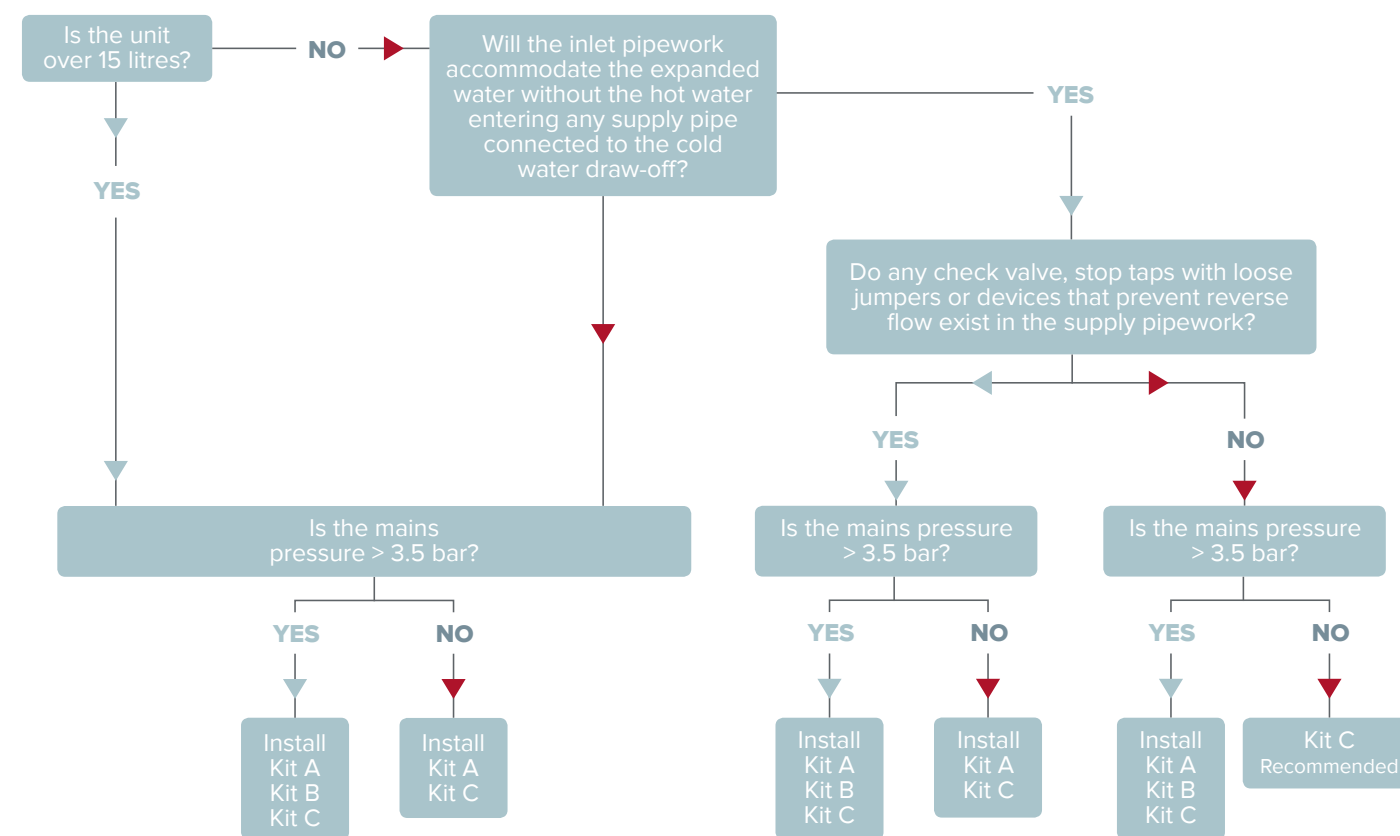


KIT C DISCHARGE TUNDISH

In the event that the hot water system over pressurises, the highly pressurised water is discharged via the 6 bar pressure relief valve and the tundish serves to visually indicate that this discharge is occurring.

The Andris Lux[®] electric water heaters should be installed with different kits depending on the configuration.

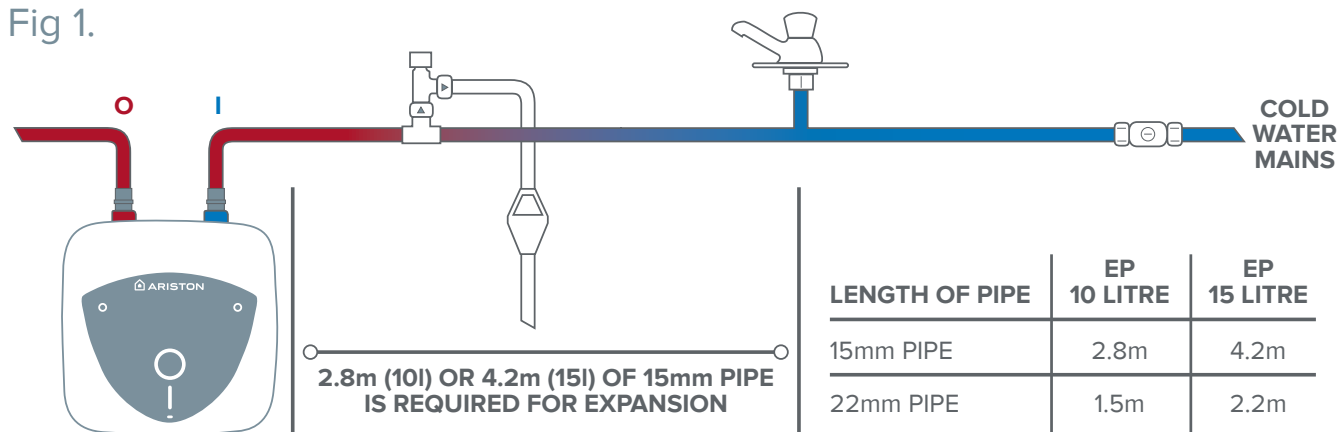
The following guidelines are designed to help select the correct kits prior to installation:



* Andris Lux 30l units come complete with Kits A, B + C.

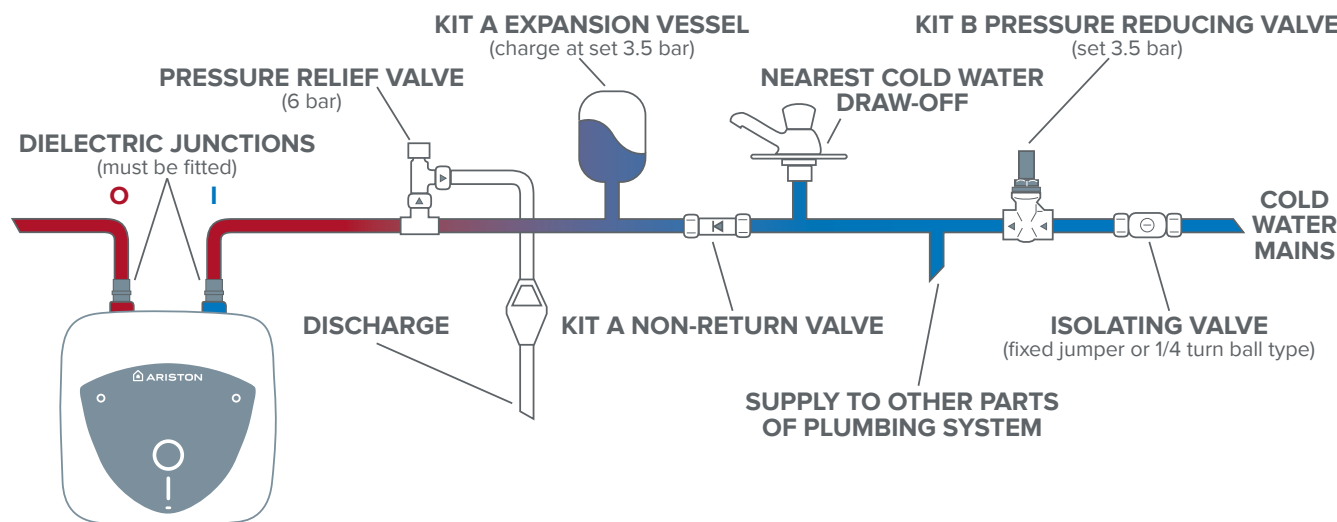
ANDRIS LUX INSTALLATION

Fig 1.



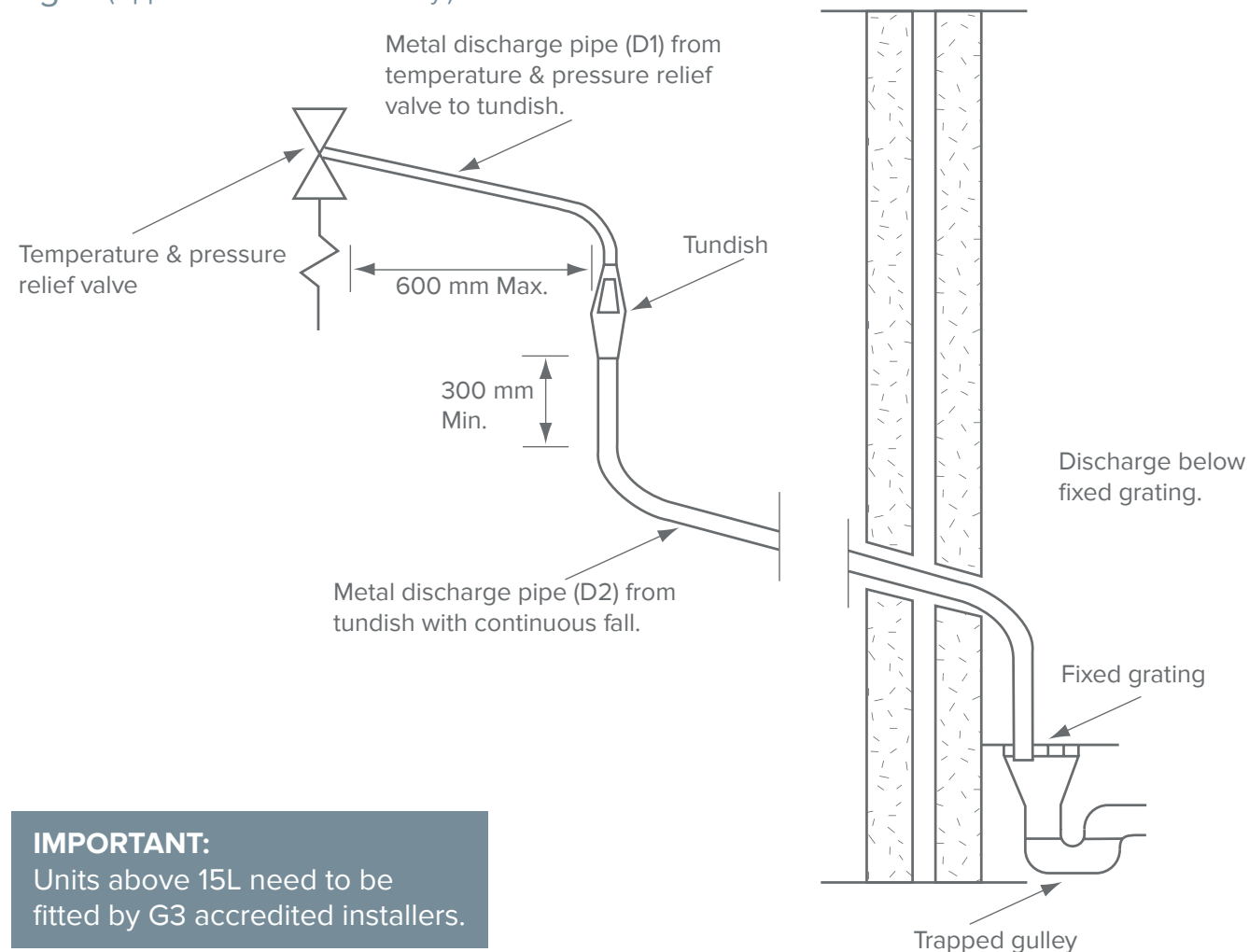
- Carefully unpack the appliance and read the installation instructions.
- Make sure all the fitting components are present:
 - 6bar pressure relief valve.
 - Dielectric junctions (Connections for the appliance).
 - Wall hanging bracket.
- Fit dielectric junctions to inlet and outlet water connections.
- Mark the wall as outlined in the instruction booklet. Drill and affix the hanging bracket to the wall. Carefully hang the appliance on to the wall brackets.
- Turn off and isolate cold water supply. Tee into supply and, if required, fit pressure reducing valve and expansion vessel. Fit 6bar PRV and connect cold water supply to appliance inlet (see Fig. 2).

Fig 2. (Applicable to 10L & 15L units only).



- Connect hot water outlet on appliance to the domestic hot water system.
- Install discharge pipe from the 6bar pressure relief valve to terminate in to a drain or point of safety (see Fig. 3).
- Connect the 13amp electrical supply to appliance.

Fig 3. (Applicable to 30L units only.)



- Turn on cold mains water supply to fill appliance.
- Commission appliance in accordance with the installation manual.