

130x190mm 2019.11.20



AIR COOLER

MODEL: MYCRC

Safety Instructions:

Please read this instruction manual carefully before use and keep in a safe place for future reference. If you give the appliance to another person supply them with this instruction manual.

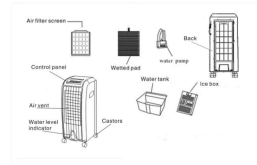
www.mylek.co.uk

Introduction:

General Information:

Please read the entire instruction manual before using the product and save for future reference. We reserve the right for any errors in text or images and any necessary changes made to technical data. If you have any questions concerning technical problems please contact our Customer Services on 0800 091 3171.

Exploded Parts Diagram:



Technical Information:

Table with 5 columns: Model, Rating Power, Power, Max Water Injection Rate, Specification. Row 1: MYCRC, 230V, 50Hz, 75W, 4L. Row 2: Cooling only.

Correct use:

- For best results it is important to place the unit on the floor near an open window or door so clean cool air is circulated at all times. Failure to do this can cause an odour due to the same air being re-circulated. If an odour is present simply move the unit to an open window or door so fresh cool air is circulated at all times.

www.mylek.co.uk

GENERAL SAFETY WARNING:

- The appliance is to be operated by responsible adults only after reading and understanding these instructions. Children from 16 years and above and persons with reduced physical, sensory or mental capabilities shall only switch on/off the appliance provided it has been placed or returned in its intended normal operating position and they have been given supervision or instruction concerning use of the appliance in a safe way and understand the hazards involved. Children less than 16 years shall not plug in, operate, regulate and/or clean the appliance or perform user maintenance. Children should not play with the appliance and if less than 3 years old should be kept away unless continuously supervised. Use as per the voltage rating label required. Do not repair or make mechanical alterations to the appliance. It should be repaired by a qualified person or returned to the distributor if faulty. Do not operate the appliance with wet hands. If the supply power cable is damaged, it must be replaced by the manufacturer, its service agent or a suitably qualified person. When the appliance is not in use switch it off and unplug. Do not insert foreign objects into the air outlets and inlets. This could damage the unit and is dangerous. Do not use the appliance near combustible gas and/or any source of heat. Only use the appliance on a flat surface. Do not use outdoors. The level of water in the water tank should not go over the "MAX" indicator on the scale at any time. During operation the total level of water in the water tank should not go below the "MIN" indicator on the scale at any time. After adding water to the water tank, do not tilt or knock over the appliance. The unit should remain stable on a flat surface once water is added to avoid spillage. Do not turn the appliance over. If it is knocked over with water in the unit, turn off and unplug from the power supply immediately. The unit should then be checked by a qualified person or returned to your place of purchase for examination and repair.

www.mylek.co.uk

- Do not cover the air vents. Clean the unit with a light damp cloth. Do not use any type of detergent or chemical solution. Do not place air outlets and/or inlets near to walls or curtains or any other restricting environment. Do not knock or shake the body of the unit when using. This may cause the appliance to stop automatically. To prevent odours being emitted change the water frequently. Do not use the appliance in the proximity of a bath, shower, swimming pool or any other body of water.

FUNCTIONS:

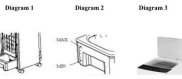
- Principle of Cooling: Water is taken from the water tank by pump to the top of the unit, then the water drops into the paper evaporator. When the water in the paper evaporator evaporates to water vapor it produces cool air. Water evaporation reduces air temperature and raises relative humidity. Electronic control panel: Safe and user friendly. Adjustable speed and fan type: The unit has three speeds and fan types (normal/sleeping). Delivers cooling wind at a wide angle: The rear louvers can be operated to bring automatically delivering cooling wind at a wide angle. The front louvers can be adjusted manually to change the direction output of the airstream. Remote control: Operates < 6 meters away and with a reception angle of up to 60 degrees.

ASSEMBLING AND FILLING OF THE TANK:

- Assembling castors: Put the appliance on a flat surface, and using the spanner supplied securely fit the castors. Fill the water tank out by 1/3 then add clean water (diagram 1). Pay attention to the level of water in the tank when adding water (diagram 2). The level of water in the tank should not go over the "MAX" indicator on the scale at any time. When humidifying the level of water in the tank should not go below the "MIN" indicator on the scale at any time. Put ice or a frozen ice box (only one ice box at a time is recommended) into the bottom water tank if you want to increase the cooling rate and effect. Be sure that the total water level never exceeds the "MAX" limit indicated on the bottom tank.

www.mylek.co.uk

- Ice boxes can also be added to the top of the unit by simply lifting the top lid and placing in the ice boxes in the front compartment, we recommend one ice box in the bottom tank and one ice box in the top tank to increase the cooling effect. Ice boxes can also be stored in this compartment for out of season storage (diagram 3). For ease, water can also be added carefully to the top of the unit, please ensure water never exceeds the "MAX" limit indicated on the bottom tank when filling from the top. Always make sure the unit is switched off and unplugged when topping up with water (diagram 3).



OPERATION:

- ON/OFF on control panel: Press this button to turn on the appliance, this unit will start to operate in low speed and normal wind type. Press again to switch off the unit. Speed: Press this button to choose between speeds LOW-MEDIUM-HIGH. Mode: Wind type: Press this button to choose between normal wind, natural wind and sleeping wind. Swing: When this button is pressed the airstream louvers will swing horizontally. This function is cancelled when you press the button again. NOTE: You can manually set the units front blades to desired position to change the wind direction to blow cool air up or blow cool air down. When manually adjusting up or down please ensure the unit is powered off and unplugged from the mains supply. Timer: This button operates the timer from 1 to 8 hour options with increments of 1 hour. The unit will switch off when your set time has elapsed. Cool: Press this button to start the cooling system. Press again to cancel this function. IMPORTANT: To protect the unit water pump please ensure there is enough water in the water tank before using this function.

www.mylek.co.uk

USE OF REMOTE CONTROL:

Insert batteries (2 x AAA-not supplied). There are 6 buttons on the remote control. They have the same function as the control panel. Point the remote control to the unit to operate. The effective distance is up to 6 meters. When the remote control is not in use store safely and remove batteries.

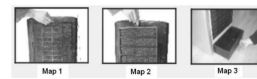
Important:

- Do not mix old batteries with new ones. Please remove the batteries if the remote is not in use for long periods. Dispose of batteries responsibly at your local hazardous waste collection site or recycling facility.

Pat Testing

When used in a workplace, this product must be safety-tested yearly by a qualified electrician (PAT Tested) in order to comply with the Electricity at Work Regulations. We recommend that it is PAT tested regularly when used in a domestic environment.

CLEANING AND MAINTENANCE



We recommend changing the water on a daily basis to help keep the filter and wetted pad clean and free from odours.

- 1. To clean the air filter screen (map 1). Turn off the power supply and unplug the unit, remove the top two screws holding the air filter screen in place at the top rear of the unit, remove the air filter screen. Clean the air filter screen carefully with neutral detergent and soft brush. Rinse it thoroughly with clear, clean water and leave to dry. After cleaning the air filter re-install into the appliance and screw back into place.

www.mylek.co.uk

- 2. To clean the wetted pad (map2). Turn off the power supply and unplug the unit, remove the top two screws and remove the air filter screen. Then remove the wetted pad from the unit (please note the correct position for the wetted pad for when re-installing). Clean the wetted pad carefully with neutral detergent and soft brush. Then rinse it thoroughly with clean water. After cleaning re-install the pad into the appliance in the correct position and screw the air filter screen back into place. Attention: The wetted pad must be installed correctly in order to avoid leaking. 3. To clean the water tank (map 3) Turn off the power supply and unplug the unit, place the unit over drain or similar item that can collect water. Turn the Tank Securing Latch upwards and pull out the water tank by 1/3 distance, remove the rubber water drain bung which is located to the left front corner of the trough where the water pump is located, let the water drain away. Clean the tank carefully with neutral detergent and wipe it thoroughly with a cloth and clean water, replace the rubber water drain bung securely and fill the tank and test that the rubber water drain bung is fitted correctly and there are no leaks. Push the tank back into place and secure with the Tank Securing Latch. 4. To clean the outside. Clean carefully with neutral detergent and soft cloth. IMPORTANT: Turn off the power supply and unplug when cleaning the appliance. Do not leave any water on the surface of control panel.

www.mylek.co.uk

Environmental Responsibilities

Meaning of crossed-out wheeled dustbin: Do not dispose of electrical appliances as unsorted municipal waste, use separate collection facilities. Contact your local council for information regarding the collection systems available. If electrical appliances are disposed of in landfills or dumps, hazardous substances can leak into the groundwater and get into the food chain damaging your health and well-being. When replacing old appliances with new ones, the retailer is legally obligated to take back your old appliance for disposal free of charge.

SERVICE WARRANTY

Hygiene Supplies Direct guarantees the product free from defects in materials and workmanship for a period of 1 year from date of purchase. Should this unit be operated under conditions other than those recommended, at voltages other than the voltage indicated on the unit, or any attempts made to service or modify the unit, then the warranty will be rendered void. The product you buy may sometimes differ slightly from illustrations. This warranty is in addition to, and does not affect, your statutory rights. If you have any problems with this product, please call our Help Desk on 0800 091 3171 or email sales@hygenesuppliesdirect.com

City Electrical Factors Ltd, Cambridge, England. W19-458-0004 that the MYCRC Air Cooler is exclusively manufactured and imported by Hygiene Supplies Direct Ltd.

www.mylek.co.uk