

MANUAL FOR

GLAM
haus

GL300

DIGITAL ELECTRIC CLOTHES AIRER & COVER



BEFORE USE:

Please read the instructions carefully. You must inspect the appliance including its cable and plug for any signs of damage. If the product is damaged, **DO NOT USE** and contact your supplier immediately for refund or replacement.

www.glamhaus.co.uk

Introduction

General Information

Please read the entire instruction manual before using the product and then save it for future reference. We reserve the right for any errors in text or images and any necessary changes made to technical data. If you have any questions concerning technical problems please contact our Customer Services on 0800 091 3171.



Before using this heater

When using electrical appliances, basic precautions should always be followed to reduce the risk of fire, electric shock, and injury to persons. This includes but is not limited to the following:



CAUTION:

This appliance is not intended for use by persons (including children) with reduced physical, sensory or mental capabilities, or lack of experience and knowledge of the product. The appliance is to be operated by responsible adults only after reading and understanding these instructions. Children should be supervised at all times to ensure that they do not play with the appliance. Children under 16 years should not operate the unit or carry out maintenance and/or clean the unit. Any infirmed persons in the vicinity of the unit should be accompanied by a responsible and competent able bodied adult. Remove the packaging and make sure that the appliance is intact. If there is any doubt concerning the integrity of the unit, do not use the appliance and contact our recommended after-sales service. Do not leave any packaging materials within easy reach of children. Before switching on the appliance, check if the electrical voltage and frequency of the circuit correspond to those indicated on the appliance. Use the appliance only for the stated purpose, namely as a clothes airer for domestic use. Do not use it for any other application as it could be dangerous.



Safety Instructions

- Before operation make sure your electricity supply matches the voltage shown on the appliance.
- Always inspect the appliance before use for noticeable signs of damage. Do not use the appliance if damaged or has been dropped. In the event of damage or if the appliance develops a fault, contact your place of purchase for repair or replacement.
- Do not use this appliance if the power lead is damaged. Contact your place of purchase for repair or replacement.
- Always use the appliance on a dry, level, heat resistant surface.
- Use this appliance only as described in this manual. Any other use not recommended by the manufacturer may cause fire, electric shock, or injury to persons.
- Unplug from the mains supply when not in use.
- Do not use any accessories or attachments with this appliance other than those supplied with the product or recommended from your place of purchase.
- To protect against fire, electric shock or personal injury, do not immerse the power cord, plug in water or any other liquids.
- Avoid contact between the lead and hot surfaces/liquids. Keep the product plug and lead away from ovens, electric and gas burners, flames and flammable liquids.
- For indoor and domestic use only.
- This appliance should only be used for airing and drying clothes as described within the instructions.
- Always ensure that your hands are dry before removing the plug from the mains socket.
- Never pull the plug out of the mains socket by its power lead or carry the appliance by its lead.
- Do not connect this appliance to an external timer or remote control system.
- CAUTION: The plastic bags used to wrap this appliance or the packaging may be dangerous. To avoid risk of suffocation, keep these bags out of reach of babies and children.
- Always switch off and unplug the appliance after use, leaving it to cool down completely before closing and storing in a safe place.
- Ensure the appliance is folded out securely before loading it with laundry and switching on.
- When opening and closing the appliance, never use force. The mechanisms should move freely and easily. Keep fingers away from the folding parts.
- Do not overload the appliance; the maximum load of the appliance is 16kg. Load evenly across the surface to avoid the appliance tipping over.

Main Parts



1. Heating rack x6
2. Foot x2
3. Digital Control
4. Top rack x2
5. Peg hanger x2
6. Cover x1

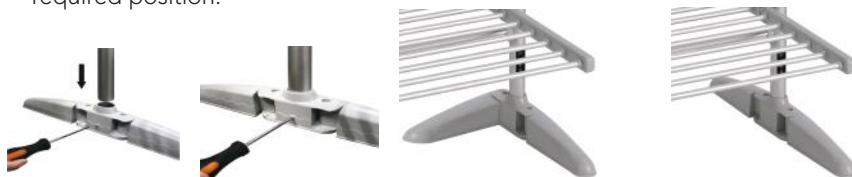
Specification

Model: GL300
Unit size: 720w x 700d x 1490mmh
Voltage: AC220-240V
Frequency:..... 50/60Hz
Rated power: 300W
IP Rating: IP X1

Installation instructions

Assembly

1. Install each foot as shown below, then insert and secure the screws provided on both sides of the base. When secured into place open the support legs to your required position.



2. Unhook each shelf and simply fold down into position.



3. Install the two top extension racks by simply slotting into place as shown below. **Please note** this is an extension rack and will not heat up like the rest of the clothes airer.



4. The two peg hangers If required can be secured to any bar of the clothes airer, these are perfect for smaller garments like socks or underwear etc.



5. The Ainer Cover is specially designed to help your electric clothes dryer provide even better results. Simply slip the cover over the top and your laundry will dry even quicker as the heat is trapped. This means that your clothes will be dried in less time and you can pack your airer away and get your living space back in no time.



Digital display (instructions for use)

Basic Instructions

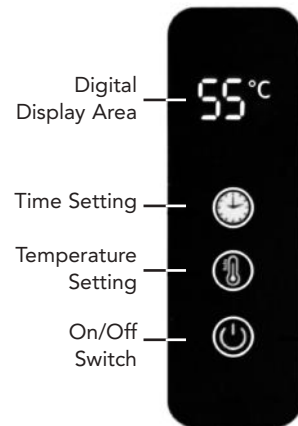
1. Power supply: 220V-240V~; 50/60Hz;
2. Control accuracy: $\pm 3^{\circ}\text{C}$;
3. Temperature setting range: 30~70°C;

Please note the temperature you set the unit to will be reached depending on the current room conditions. Example; If you place the unit in a cold room the unit will work harder and may take longer to reach your set temperature.

4. Control: Soft touch control.
5. For best results please cover the temperature sensor location bar first to maximise drying or airing. The temperature sensor location is highlighted on one of the unit bars with a clear sticker.

Digital Control

- Press the "On/Off Switch" button to switch the unit on or off.
- Press the "Time setting" button, select between 1-9 hours, when your set time is reached the unit will switch OFF. If you choose "0" the unit will work continuously until you manually turn the unit off.
- Press the "Temperature setting" button to set your required temperature, the setting range is 30~70°C and will show on the digital display, it will also show the current temperature as it reaches your set temperature.
- When the unit surface is not covered with items, the product temperature will be lower than the set temperature.



Storage of your appliance

1. Please ensure the appliance is unplugged from the power outlet and completely cooled down before folding for storage.
2. Fold the appliance by folding up the heated shelf sections on each side and clip together using the clip attached to the top bar.
3. Remove the top two extension racks and store away safely.
4. Fold in the bottom feet.
5. Store the appliance and extension racks in a safe dry place.
6. Check all parts including plug and power cable for wear or damage after every use and after storing.

PAT Testing

When used in a workplace, this product must be safety-tested yearly by a qualified electrician (PAT Tested) in order to comply with the Electricity at Work Regulations. We recommend that it is PAT tested regularly when used in a domestic environment.

Maintenance

The appliance needs regular external cleaning only.

After use and before cleaning, always switch off, unplug the appliance and wait until the item is cool.

Do not clean the unit with abrasive materials or solvents. Use only a damp cloth and wait until completely dry before plugging the appliance back into the power outlet.

Important

The importer retains his right to make changes in appearance and completeness of the item without preliminary notification to the customer. The item is for household use only.

The manufacturer does not assume any liability for any damage caused directly or indirectly by not following this instruction manual, general safety rules, or interference in the construction of the product



This marking indicates that this product should not be disposed with other household wastes throughout the EU. To prevent possible harm to the environment or human health from uncontrolled waste disposal, recycle it responsibly to promote the sustainable reuse of material resources. To return your used device, please use the return and collection systems or contact the retailer where the product was purchased. They can take this product for environmental safe recycling.

SERVICE WARRANTY

Hygiene Supplies Direct guarantees the product free from defects in materials and workmanship for a period of 1 year from date of purchase.

Should this unit be operated under conditions other than those recommended, at voltages other than the voltage indicated on the unit, or any attempts made to service or modify the unit, then the warranty will be rendered void. The product you buy may sometimes differ slightly from illustrations. This warranty is in addition to, and does not affect, your statutory rights.

If you have any problems with this product, please call our Help Desk on **0800 091 3171** or email sales@hygienesuppliesdirect.com

Hygiene Supplies Direct Ltd, Castleford, WF10 1PA, declares that the Digital Electric Clothes Airer and Cover is exclusively manufactured and imported for GlamHaus.